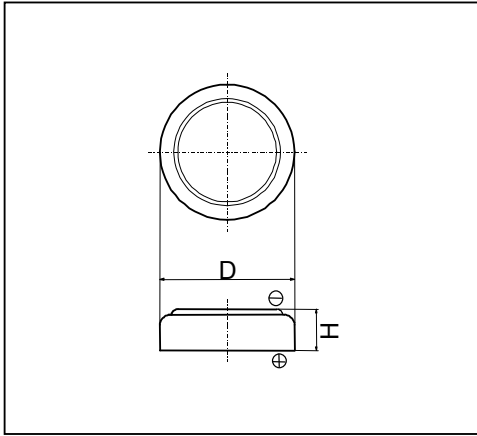


Cell Type ML614R Specifications



Nominal Voltage (V)		3
Nominal Capacity(mAh) ^{*1}		2.5
Standard Charge/Discharge Current (mA)		0.005
Max. Discharge Current (mA)	Continuous ^{*2}	0.05
	Pulse ^{*3}	0.06
Charge/Discharge Cycle Characteristics		Discharging Depth of 10%
Charging Method		Constant Voltage Charge
Operating Temperature Range (°C)		-20 ~ +60
Dimensions (mm)	Diameter(D)	6.8
	Height(H)	1.4
Weight (g)		0.19
Reflow Temperature(°C)		260

*1 Nominal capacity is determined to an end voltage of 2.0V when the battery is allowed to discharge at a standard current level at 23°C.

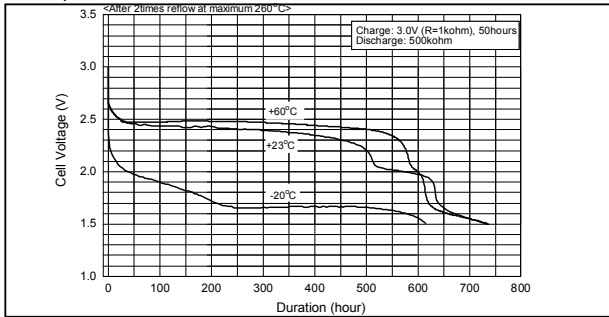
*2 Current value is determined so that 50% of the nominal capacity is obtained with an end voltage of 2.0V at 23 °C.

*3 Current value for obtaining 0.8V cell voltage when 15sec. pulse is applied at 50% discharge depth at 23 °C.

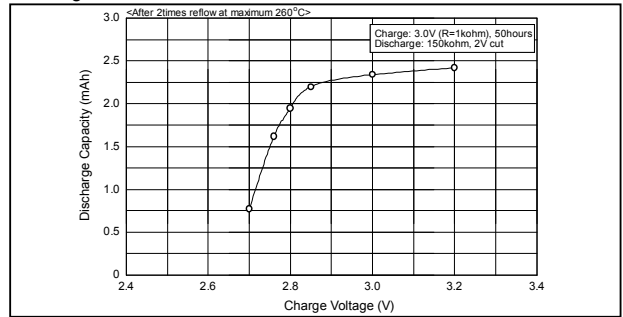
* ML614R is capable of reflow soldering. Consult with FDK about the reflow condition.

Typical Characteristics

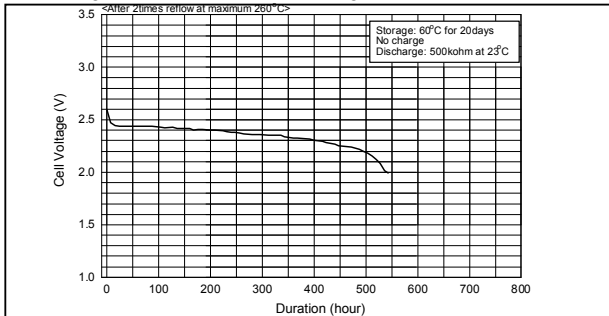
Temperature Characteristics of ML614R



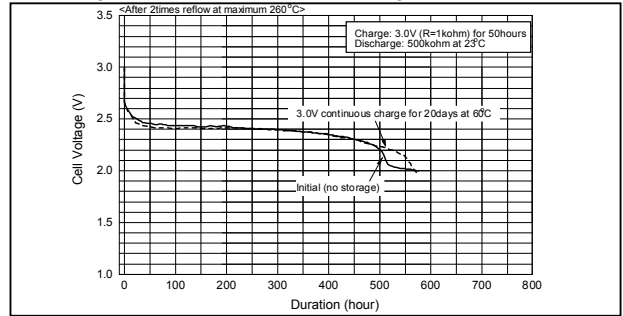
Charge Characteristics of ML614R



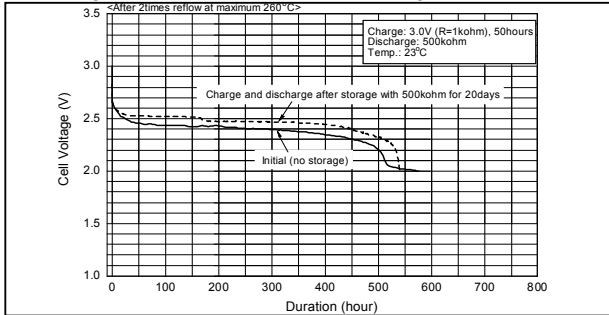
Discharge Characteristics after Storage of ML614R



Discharge Characteristics after Over-charge of ML614R



Discharge Characteristics after Over-discharge of ML614R



Charge/Discharge Cycle Characteristics of ML614R

